

## CSSD Packing Tables



These height-adjustable packing tables have mainly been designed with people packing instrument sets in the central sterilisation unit in mind.

Our packing table allows your staff to work in an ergonomic fashion as the height can be adjusted to the type of task that needs to be performed and to people's anatomy and personal preferences. Thanks to the table's flexibility, staff can get on with their business in the most optimum working position.

The packing tables are shipped dismantled and should be assembled by your distributor's or your own technical staff.

The table's flexibility also means that workstations can be arranged to make the best possible use of the available space.



### » Easily height adjustable

The height of the table can be set to anything between 765 mm and 1265 mm.

The height setting control comes with three different memory settings, allowing you to program a range of positions, which will prove very convenient if the same workstation is used by a number of people. The controls are located right underneath the worktop and are easy to reach.



### » Flexibility

Aside from sockets, UTP and compressed air, the superstructure can also accommodate a range of accessories.

All CSSD Packing Tables come standard with 220V electrical supplies, if another type of electrical supply is required, this should be sourced locally.

Options and accessories marked with an \* are intended for mounting during the production process, not afterwards.



### » Worktop

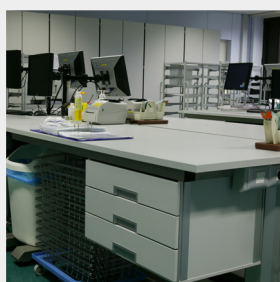
The worktop is available in various sizes and finishes. Depending on the intended use, we can offer you a choice between stainless steel and HP laminate.

## » CSSD Packing Tables - no upper structure fixture possible



### » CSSD table with stainless steel worktop

Article Number	Dimensions worktop
17005 00086	1800 x 800 x 20 mm
17005 00088	1800 x 1000 x 20 mm
17005 00090	2000 x 800 x 20 mm
17005 00093	2000 x 1000 x 20 mm



### » CSSD table with HP laminate worktop

Article Number	Dimensions worktop
17005 00192	1800 x 800 x 13 mm
17005 00194	1800 x 1000 x 13 mm
17005 00196	2000 x 800 x 13 mm
17005 00151	2000 x 1000 x 13 mm

## » CSSD Packing Tables - suitable for upper structure components



### » CSSD table stainless steel worktop for upper structure

Article Number	Dimensions worktop
17005 00082	1800 x 800 x 20 mm
17005 00084	1800 x 1000 x 20 mm
17005 00046	2000 x 800 x 20 mm
17005 00048	2000 x 1000 x 20 mm

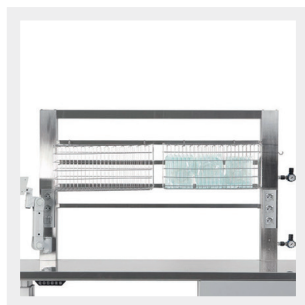


### » CSSD table with HP laminate worktop for upper structure

Article Number	Dimensions worktop
17005 00158	1800 x 800 x 13 mm
17005 00165	1800 x 1000 x 13 mm
17005 00198	2000 x 800 x 13 mm
17005 00149	2000 x 1000 x 13 mm

Photos not binding. The new generation of packing tables has drawer units with surface-mounted handles.

## » Accessories for all types of CSSD Packing Tables



### » Upper structure for baskets and trays \*

Article Number	Description	Ext. Dimensions
17005 00022	With LED-lamp	1420 x 920 mm
17005 00286	Without LED-lamp	1420 x 920 mm



### » Upper structure for cutting device \*

Article Number	Description	Ext. Dimensions
17005 00116	With LED-lamp	1420 x 920 mm
17005 00142	Without LED-lamp	1420 x 920 mm
17005 00095	Cutting device	Length 1200 mm



### » Shelf for stock of laminate sacs \*

Article Number	Maximum weight	Dimensions shelf
17005 00131	10 kg	400 x 1219 x 13 mm



### » Sockets for upper structure \*

Article Number	Description
17005 00023	3x socket
17005 00056	2x socket + switch (mounting always on the right-hand side)
17005 00057	2x socket + 2x UTP connection
17005 00058	1x Socket + 2x 2 UTP connections
17005 00160	1x socket + 2x UTP connection + switch (mounting always on the right-hand side)
17005 00148	Filling plate for electric sockets
17005 00190	Filling plate for electrical socket + switch (mounting always on the right-hand side)

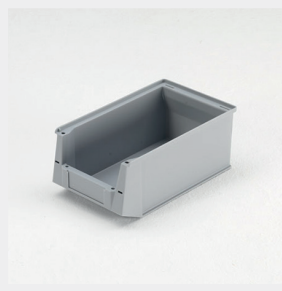
Options and accessories marked with an \* are intended for mounting during the production process, not afterwards.

## » Upper structure components



### » Stainless steel hook for the attachment of baskets

Article Number	Description
17005 00036	Oblique fixation of the wire basket
17005 00038	Straight fixation of the wire basket



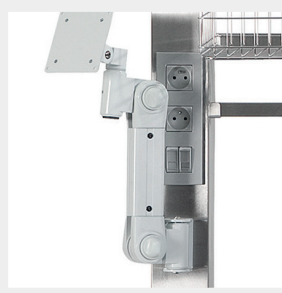
### » Sorting basket for upper structure

Article Number	Ext. Dimensions
15007 00043	147 x 230 x 132 mm
15007 00042	210 x 350 x 145 mm
15007 00044	210 x 350 x 200 mm
17002 00023	Universal hook for the attachment of baskets to the upper structure



### » Drawer unit including ABS modules with 3 drawers of 100 mm high

Article Number	Description	Filling	Ext. Dimensions
17005 00250	Pre-mounted *	3 ABS modules	652 x 478 x 406 mm
17005 00251	For mounting afterwards	3 ABS modules	652 x 478 x 406 mm



### » Flex arm with VESA 100 connection for attachment of a screen \*

Article Number
14009 00019



### » Inspection lamp with magnifying glass \*

Article Number	Dimensions of the lens	Dioptr
30001 00034	Ø 120 mm	5

Options and accessories marked with an \* are intended for mounting during the production process, not afterwards.

## » Upper structure components



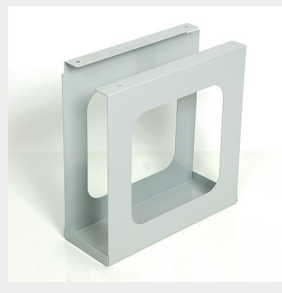
### » Inspection lamp with magnifying glass and adjustable light \*

Article Number	Description	Dimensions of the lens	Dioptré
30001 00033	-	162 x 105 mm	3
On demand	With LED lighting	Ø 153 mm	3,5



### » Retractable drawer for Keyboard \*

Article Number	Ext. Dimensions
17005 00167	480 x 305 mm



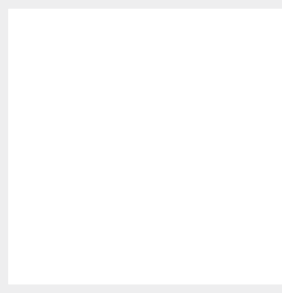
### » Computerholder under table \*

Article Number	Ext. Dimensions
17005 00070	184 x 495 x 498 mm



### » Wheels for limited displacement i.f.o. floor cleaning

Article Number
On request



### » Compressed air connection

Article Number	Description
17005 00024	Fitted in 1 column of the upper structure

Options and accessories marked with an \* are intended for mounting during the production process, not afterwards.