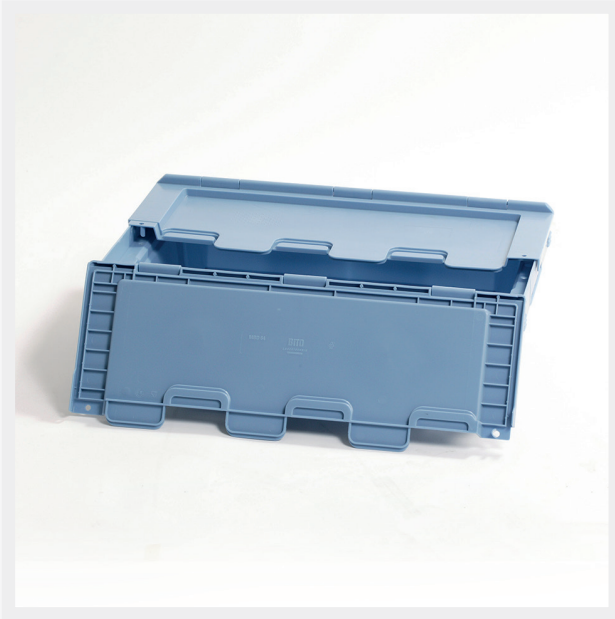


# Medibox



The injection molded Polypropylene (PP) Medibox is a closed modular transport container for medication and other goods. The box is provided with a hinged lid with teeth and can be closed with a break seal.

The Medibox is made of a durable, impact-resistant and chemically resistant material. Thanks to its design and smooth surface, the box is easy and thorough to clean.

The Medibox is a safe transport box that can be sealed with a break seal against unauthorized opening.



## » ISO

The Medibox is built according to the ISO standard and fits in most ISO transport carts of which the guides have an L-profile.



## » Closed box

The Medibox has two hinged covers that connect optimally with the tongue-and-groove system. This is to ensure that the contents are hermetically sealed as much as possible.



## » Break seals

Break seals are provided that fit on both sides of the lid, this allows for the Medibox to be secured against opening by unauthorized persons.

## » Medibox



### » Medibox - Blue

Article Number	Ext. Dimensions
15007 00002	300 x 400 x 190 mm
15007 00003	300 x 400 x 290 mm
15007 00023	600 x 400 x 190 mm
15007 00006	600 x 400 x 290 mm



### » Medibox - Yellow

Article Number	Ext. Dimensions
15007 00061	300 x 400 x 290 mm
15007 00059	600 x 400 x 290 mm



### » Break seals for Medibox

Article Number	Colour
15009 00012	Red
15009 00010	Green